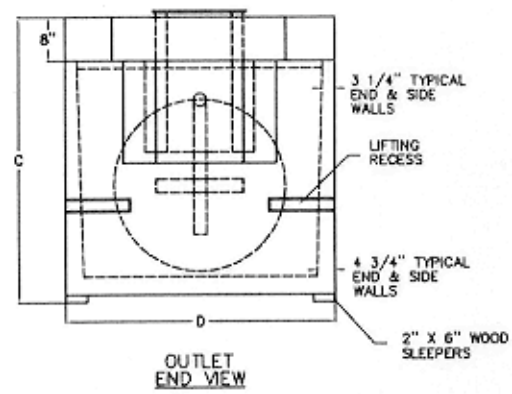
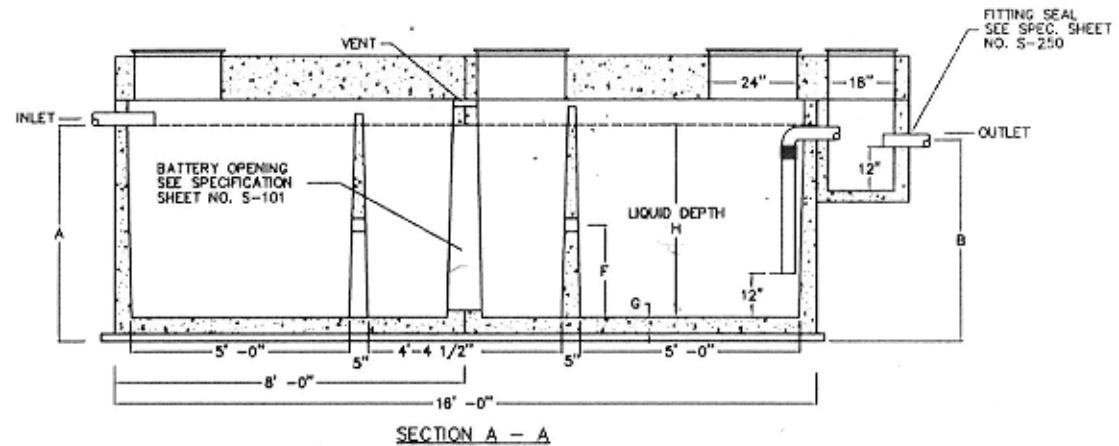


- NOTE:**
1. REFER TO SPECIFICATIONS SHEET NO. S-230
  2. REFER TO SPECIFICATIONS SHEET NO. S-252
  3. REFER TO SPECIFICATIONS SHEET NO. S-251



THREE COMPARTMENT SAND AND GREASE INTERCEPTOR WITH SAMPLE BOX  
 DESIGNED FOR DIRECT H-20 LOADING  
 OF TANK SURFACE  
 2000 THRU 3000 GALLON

ALL DIMENSIONS IN INCHES								
MODEL	A	B	C	D	E	F	G	H
PC SG-2000	50	46	65	74	74	20 3/4	4 1/2	41 1/2
PC SG-2500	59	55	74	74	74	25 1/4	4 1/2	50 1/2
PC SG-3000	62 1/2	58 1/2	77 1/2	85	85	26 3/4	5	53 1/2

EXCAVATION SPECIFICATIONS			
MODEL	SG-2000	SG-2500	SG-3000
LENGTH	23'-0"	23'-0"	23'-0"
WIDTH	10'-0"	10'-0"	11'-0"
BELOW INLET	4'-2"	4'-11"	5'-2 1/2"
TANK HEIGHT	5'-5"	6'-2"	6'-5 1/2"

**Pro-Cast**  
 PRODUCTS INC.

P.O. BOX 602  
 HIGHLAND, CA 92346  
 909 793-7602 800 945-8265  
 Fax: 909 793-1283

DATE: 10-1-01	DRAWN BY: B. BRAKE	SCALE: 1" = 1'	DWG # 8086
------------------	-----------------------	-------------------	---------------