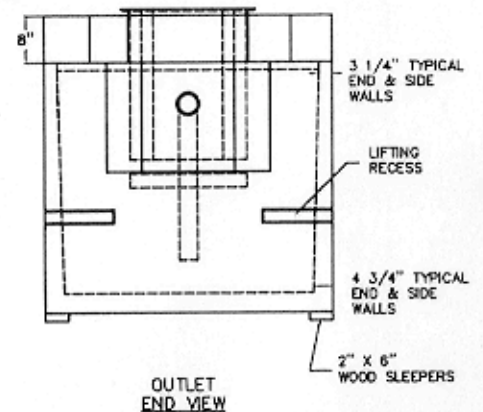
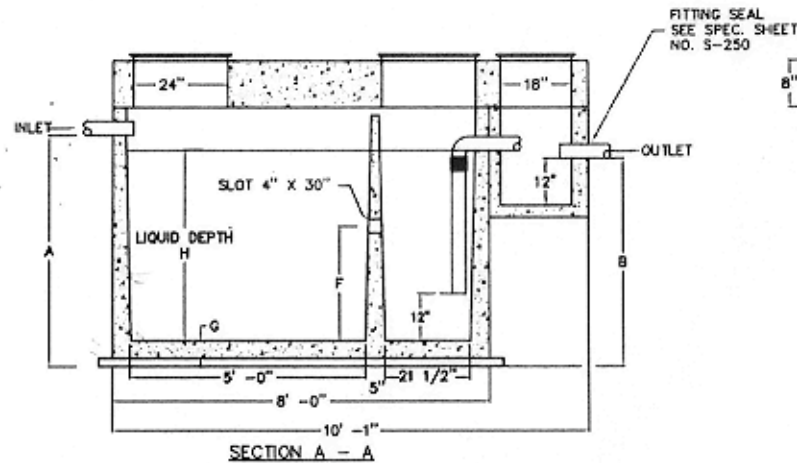
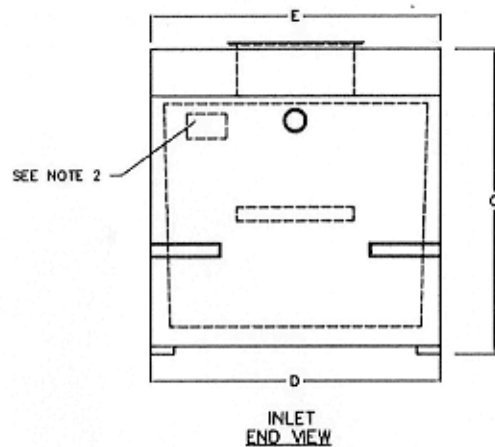
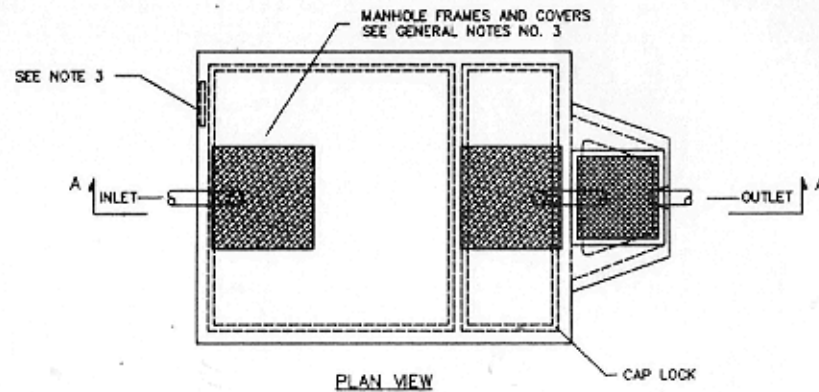


**NOTE:**

1. REFER TO SPECIFICATIONS SHEET NO. S-221
2. REFER TO SPECIFICATIONS SHEET NO. S-252
3. REFER TO SPECIFICATIONS SHEET NO. S-251



TWO COMPARTMENT  
SAND AND GREASE INTERCEPTOR  
WITH SAMPLE BOX  
DESIGNED FOR DIRECT H-20 LOADING  
750 THRU 1500 GALLONS

**Pro-Cast**  
PRODUCTS, INC.

P.O. BOX 602  
HIGHLAND, CA 92346  
909 793-7602 800 945-8265  
Fax: 909 793-1283

ALL DIMENSIONS IN INCHES								
MODEL	A	B	C	D	E	F	G	H
PC SG-750	40	38	55	74	75	19 3/4	4 1/2	31 1/2
PC SG-1000	50	48	65	74	75	24 3/4	4 1/2	41 1/2
PC SG-1200	59	57	74	74	75	29 1/4	4 1/2	50 1/2
PC SG-1500	62 1/2	60 1/2	77 1/2	85	86	30 3/4	5	53 1/2

MODEL	EXCAVATION SPECIFICATIONS			
	SG-750	SG-1000	SG-1200	SG-1500
LENGTH	12'-0"	12'-0"	12'-0"	12'-0"
WIDTH	8'-0"	8'-0"	8'-0"	9'-0"
BELOW INLET	3'-4"	4'-2"	4'-11"	5'-2 1/2"
TANK HEIGHT	4'-7"	5'-5"	6'-2"	6'-5 1/2"

DATE:  
10-1-01

DRAWN BY:  
B. BRAKE

SCALE:  
1" = 1'

DWG #  
8077