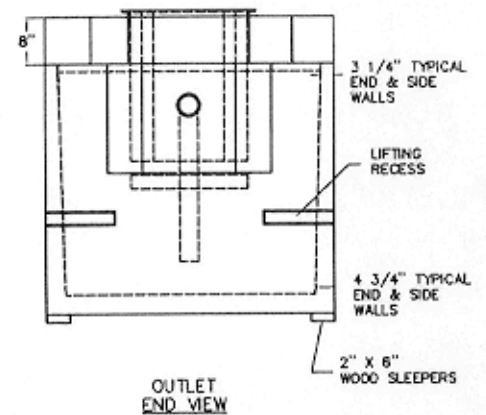
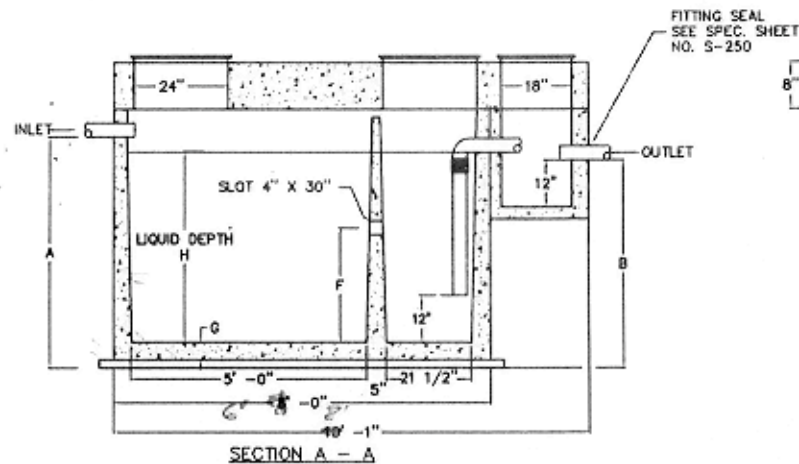
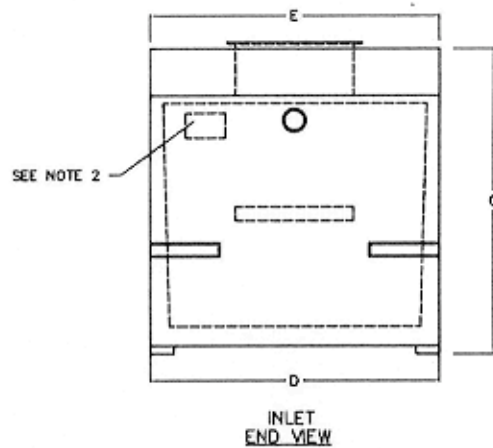
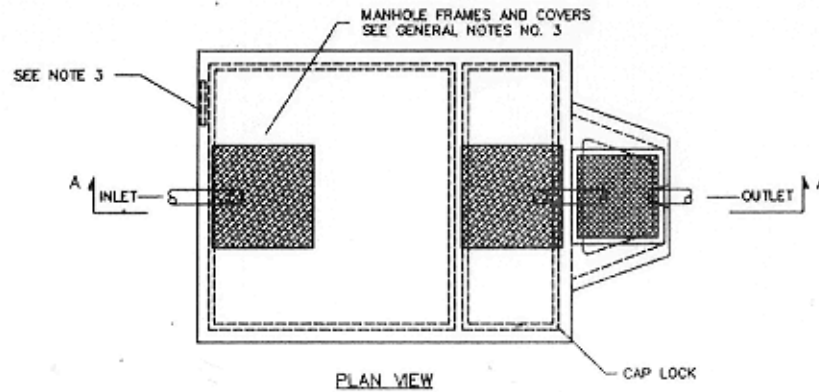


NOTE:

1. REFER TO SPECIFICATIONS SHEET NO. S-221
2. REFER TO SPECIFICATIONS SHEET NO. S-252
3. REFER TO SPECIFICATIONS SHEET NO. S-251



TWO COMPARTMENT
SAND AND GREASE INTERCEPTOR
WITH SAMPLE BOX
DESIGNED FOR DIRECT H-20 LOADING
500 GALLONS

Pro-Cast
PRODUCTS INC.

P.O. BOX 602
HIGHLAND, CA 92346
909 793-7602 800 945-8265
Fax: 909 793-1283

DATE:
10-1-01

DRAWN BY:
B. BRAKE

SCALE:
1" = 1'

DWG #
8077-M1

ALL DIMENSIONS IN INCHES								
MODEL	A	B	C	D	E	F	G	H
PC SG-500	48	44	61	54	54	15 3/4	5	39

EXCAVATION SPECIFICATIONS			
MODEL	SG-500		
LENGTH	10'-0"		
WIDTH	6'-6"		
BELOW INLET	4'-0"		
TANK HEIGHT	5'-1"		